

Advanced Instrumental Music / Instrumental Music I

Marking Period 4 Assessment

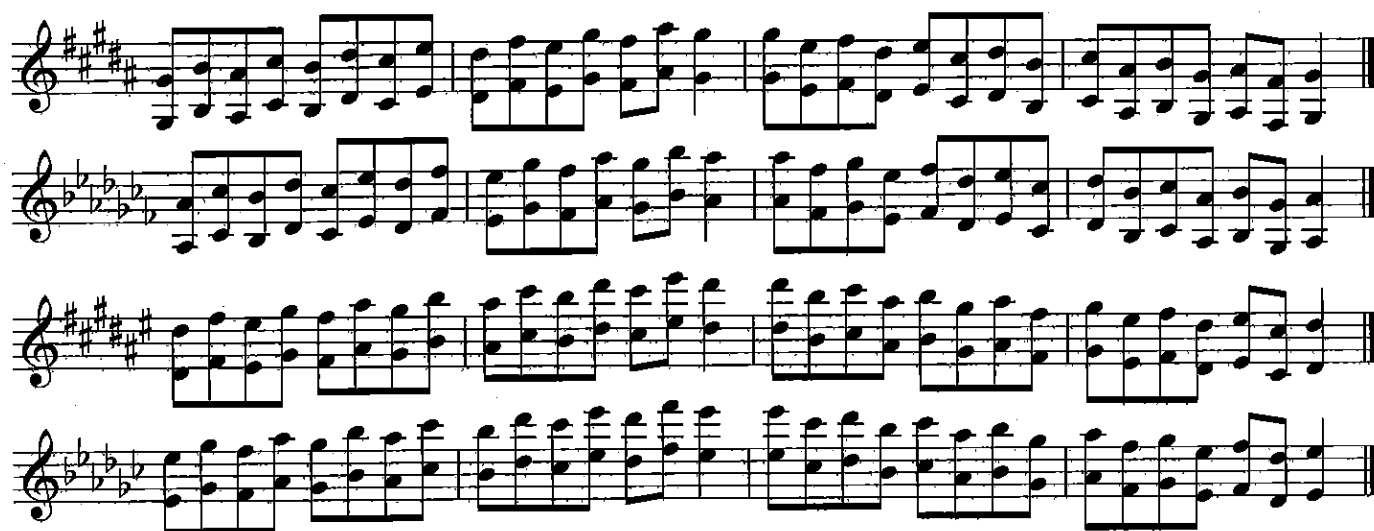
All Wind, String, and Mallet Players

ALL SCALES MUST BE PERFORMED FROM MEMORY !!!!!

First Year Members (chose one)



Second Year Members (chose one)



Third Year Members (chose one)





Fourth Year Members (chose one)



The above scales must be performed on the given starting pitch and will be scored using the rubric below.

5 Point Score:

The student demonstrates superior facility. The student is able to play a scale in the corresponding rhythm at ♩ = **minimum 120**. The student demonstrates superior tone quality and intonation. The student is able to execute the scale without pitch mistakes or any hesitations. The student is able to play the scale in one octave.

4 Point Score:

The student demonstrates excellent facility. The student is able to play a scale in the corresponding rhythm at ♩ = **minimum 100**. The student demonstrates excellent tone quality and intonation. The student is able to execute the scale with no more than two pitch mistakes and/or no more than one hesitation. The student is able to play the scale in one octave.

3 Point Score:

The student demonstrates good facility. The student is able to play a scale in the corresponding rhythm at ♩ = **minimum 80**. The student demonstrates good tone quality and intonation. The student is able to execute the scale with no more than four pitch mistakes and/or no more than two hesitations. The student is able to play the scale in one octave.

2 Point Score:

The student demonstrates average facility. The student is able to play a scale in the corresponding rhythm at ♩ = **minimum 60**. The student demonstrates average tone quality and intonation. The student is able to execute the scale with no more than five pitch mistakes and/or no more than three hesitations. The student is able to play the scale in one octave.

1 Point Score:

The student demonstrates below average facility. The student is able to play a scale slower than ♩ = **60** and the scale is not played in the corresponding rhythm. The student demonstrates below average tone quality and intonation. The student is not able to execute the scale with no more than five pitch mistakes and/or no more than three hesitations. The student is not able to play the scale in one octave.

Scoring Breakdown

5 = 100%-94% 4 = 93%-87% 3 = 86%-80% 2 = 79%-72% 1 = 71%-65% 0 = 0% (Did Not Attempt)

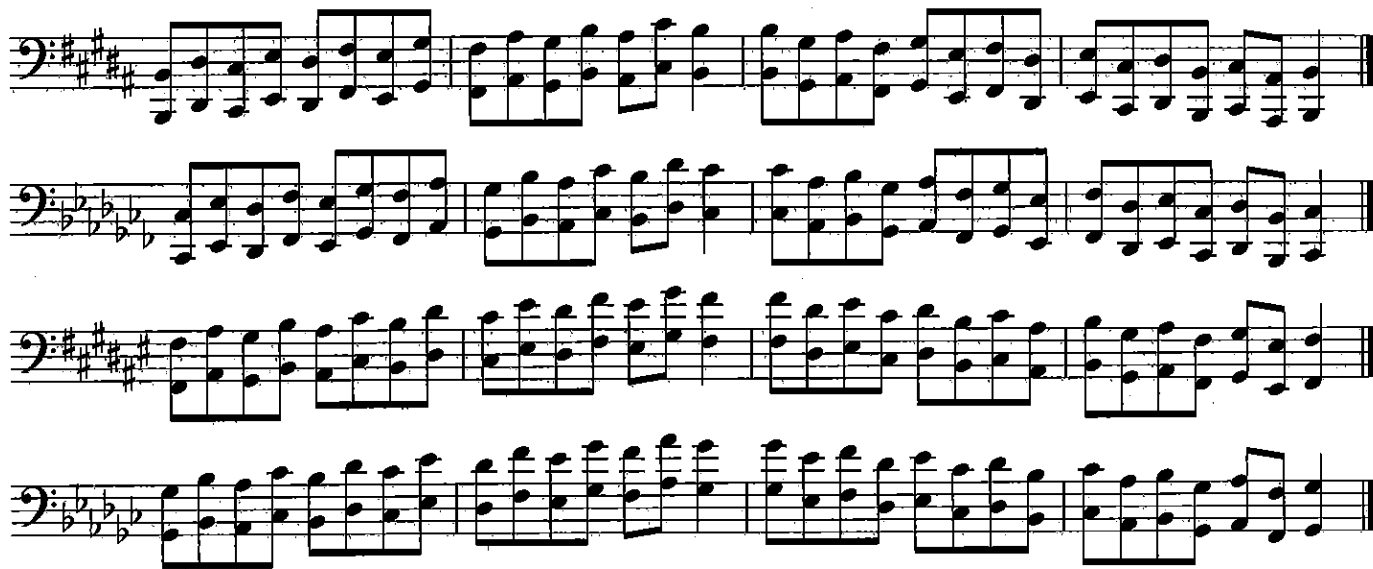
Advanced Instrumental Music / Instrumental Music I

Marking Period 4 Assessment

All Wind, String, and Mallet Players

ALL SCALES MUST BE PERFORMED FROM MEMORY !!!!!

First Year Members (chose one)



Second Year Members (chose one)



Third Year Members (chose one)





Fourth Year Members (chose one)



The above scales must be performed on the given starting pitch and will be scored using the rubric below.

5 Point Score:

The student demonstrates superior facility. The student is able to play a scale in the corresponding rhythm at ♩ = **minimum 120**. The student demonstrates superior tone quality and intonation. The student is able to execute the scale without pitch mistakes or any hesitations. The student is able to play the scale in one octave.

4 Point Score:

The student demonstrates excellent facility. The student is able to play a scale in the corresponding rhythm at ♩ = **minimum 100**. The student demonstrates excellent tone quality and intonation. The student is able to execute the scale with no more than two pitch mistakes and/or no more than one hesitation. The student is able to play the scale in one octave.

3 Point Score:

The student demonstrates good facility. The student is able to play a scale in the corresponding rhythm at ♩ = **minimum 80**. The student demonstrates good tone quality and intonation. The student is able to execute the scale with no more than four pitch mistakes and/or no more than two hesitations. The student is able to play the scale in one octave.

2 Point Score:

The student demonstrates average facility. The student is able to play a scale in the corresponding rhythm at ♩ = **minimum 60**. The student demonstrates average tone quality and intonation. The student is able to execute the scale with no more than five pitch mistakes and/or no more than three hesitations. The student is able to play the scale in one octave.

1 Point Score:

The student demonstrates below average facility. The student is able to play a scale slower than ♩ = **60** and the scale is not played in the corresponding rhythm. The student demonstrates below average tone quality and intonation. The student is not able to execute the scale with no more than five pitch mistakes and/or no more than three hesitations. The student is not able to play the scale in one octave.

Scoring Breakdown

5 = 100%-94% 4 = 93%-87% 3 = 86%-80% 2 = 79%-72% 1 = 71%-65% 0 = 0% (Did Not Attempt)

Advanced Instrumental Music / Instrumental Music I

Marking Period 4 Assessment

All Percussionists

THE RUDIMENT EXERCISE MUST BE PERFORMED FROM MEMORY !!!!!

♩ = 120
First Year (9 stroke roll, single ratamacue)

♩ = 110
Second Year (17 stroke roll, flamacue)

♩ = 80
Third Year (swiss army triplet, single dragadiddle)

♩ = 90
Fourth Year (11 stroke roll, triple ratamacue)

The rudimental exercises must be performed at the given tempo and will be scored using the rubric below.

5 Point Score:

The student demonstrates superior rhythmic accuracy and sticking. The student is able to play the exercise no slower than the prescribed tempo. The student is able to execute the exercise without rhythmical or sticking mistakes or any hesitations.

4 Point Score:

The student demonstrates excellent rhythmic accuracy and sticking. The student is able to play the exercise no more than 5 beats per minute slower than the prescribed tempo. The student is able to execute the exercise with no more than two rhythmic or sticking mistakes and/or no more than one hesitation.

3 Point Score:

The student demonstrates good rhythmic accuracy and sticking. The student is able to play exercise no more than 10 beats per minute slower than the prescribed tempo. The student is able to execute the exercise with no more than four rhythmic or sticking mistakes and/or no more than two hesitations.

2 Point Score:

The student demonstrates average rhythmic accuracy and sticking. The student is able to play the exercise no more than 15 beats per minute slower than the prescribed tempo. The student is able to execute the exercise with no more than five rhythmic or sticking mistakes and/or no more than three hesitations.

1 Point Score:

The student demonstrates below average rhythmic accuracy and sticking. The student is able to play the exercise no more than 20 beats per minute slower than the prescribed tempo. The student is not able to execute the exercise with less than five rhythmic or sticking mistakes and/or no more than three hesitations.

Scoring Breakdown

5 = 100%-94%	4 = 93%-87%	3 = 86%-80%	2 = 79%-72%	1 = 71%-65%	0 = 0% (Did Not Attempt)
---------------------	--------------------	--------------------	--------------------	--------------------	---------------------------------